

**MATREX CLUSTER™**

WEB PIN™201

**INSTALLATION  
INSTRUCTIONS**TYPE: PENDANT - **CANOPY C (CN3)**

FIXTURE CODE: MACP...P01

PAGE 1 OF 1

FIXTURE COMES PARTIALLY ASSEMBLED.



Ensure electrical circuit is disconnected before installation.



Luminaires must be installed in accordance with national electrical code and local regulation.

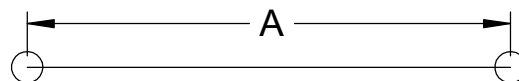
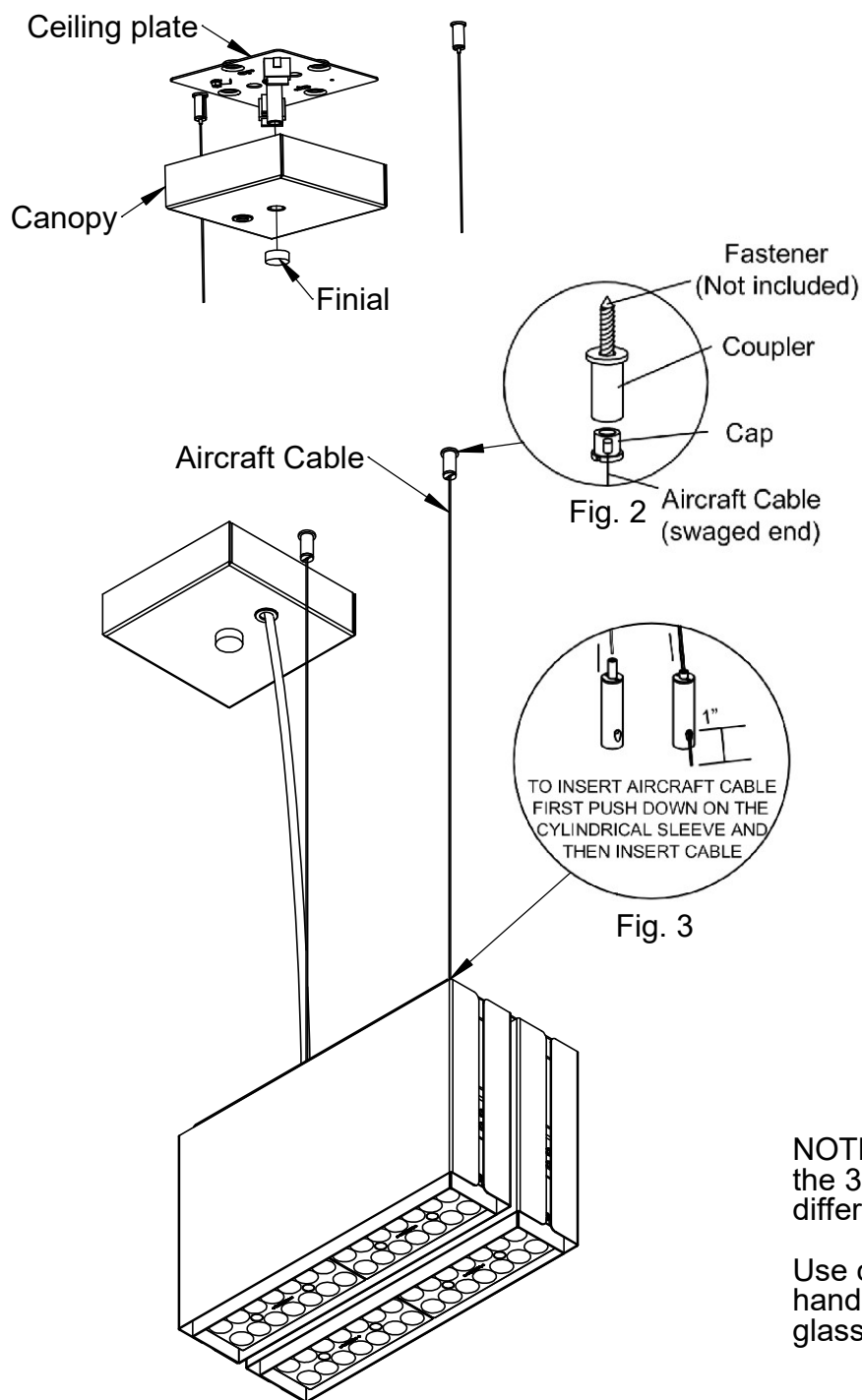


Fig. 1 - Mounting points  
 2/3 Head: A = 7.48" (190mm)  
 4 Head: A = 14.73" (374mm)



1. Mount the couplers to the ceiling using appropriate fasteners (not included) according to the structure of the ceiling (see Fig. 1).
2. Pass the aircraft cables through the caps (see Fig. 2).
3. Fasten the caps to the couplers.
4. Lift the fixture and attach the loose ends of the three aircraft cables to the cable gliders (see Fig. 3).
5. Make appropriate wiring connections and attach the canopy to the junction box using the bracket/nipple/finial assembly provided.
6. Level the fixture using the cable gliders. To release the grip lock, press down on the tip of the mechanism. If desired, clip the excess aircraft cables after the fixture is leveled.

NOTE: The 2 head version is shown above, the 3 head and 4 head versions will look different but have the same instructions.

Use cotton gloves when installing or handling fixtures with plated finish or glass/faux glass decorative components.